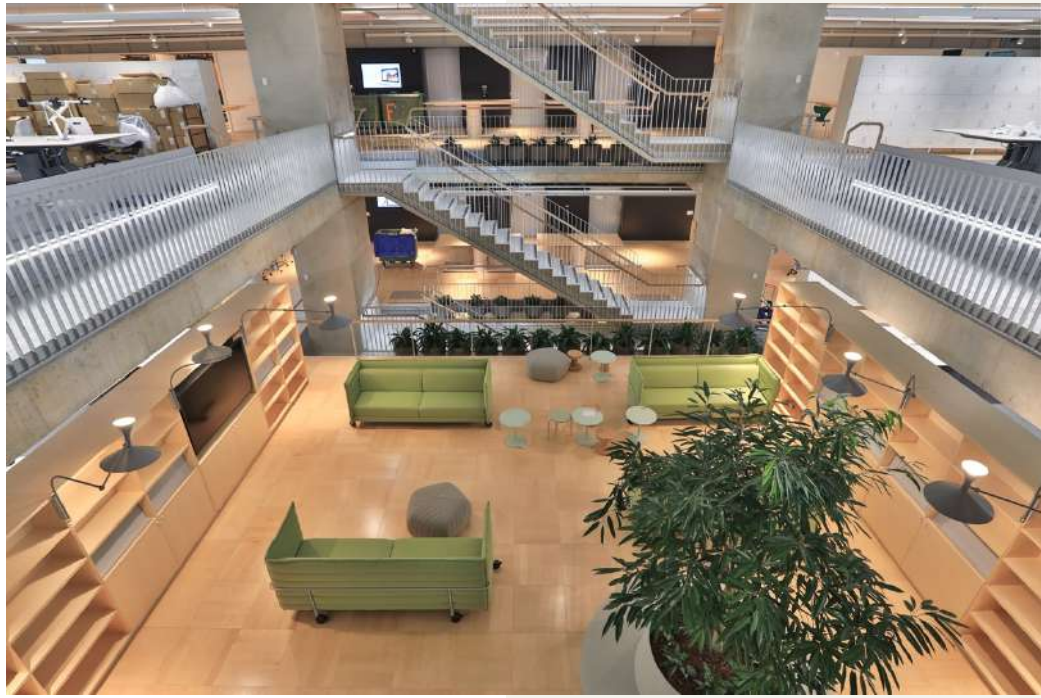


# ARUP, BARRACK PLACE

Sydney NSW

---



## Project Exclusive

Barrack Place, 151 Clarence Street, is home to Arup Sydney's new offices in the heart of Sydney CBD. Hassell Studios worked with Arup and Built Holdings to create a new kind of workspace focusing on wellness and sustainability.

The fitout achieved a 6 Star Green Star Interiors v1.1 Design Review Certified rating and is targeting a 5 Star NABERS Energy and 4 Star NABERS Water rating. It will use 100% green power as part of Arup's commitment to sustainability.

The new Arup workplace encompasses Arup's values of being design led, collaborative, social and healthy. These core values are also harmonious with ASP Access Floors values and philosophies, represented through their Environmental Product Declarations and Walk Carbon Neutral program.

## THE WHO'S WHO

---

### CLIENT

Arup

### ARCHITECT

Hassell

### BUILDER

Built Holdings

# The Access Floor Scoop

Arup incorporated into their design a low energy, low noise underfloor displacement ventilation system, utilising 8,000m<sup>2</sup> of ASP's Icon Air System. By providing air through the floor Arup have created the highest levels of indoor air quality for the occupants and ensured no mixing of pollutants in the space.

Open exchange areas surrounding the void create a welcoming space for employees and clients to come together. These open exchange areas and lift lobbies showcased 1,100m<sup>2</sup> of ASP's new Concept + Timber.

Specialist spaces such as the Sound Lab and Lighting Lab utilised 1,400m<sup>2</sup> of ASP's Concept + Vinyl custom finished with architect specified Forbo Marmoleum.

Utility areas such as Communications and Master Control Rooms showcased ASP's Concept + HPL flooring with pre-finished antistatic high-pressure laminate.



# Sustainability Trends



# Did You Know

100% Green Power

Highest levels of indoor air quality

Landcom Award for Best Sustainable Development - New Buildings

## Featured Products

### ICON AIR

ICON Air is specifically designed for environments using an underfloor HVAC (heating, ventilation and air conditioning) system.

### ICON DATA HPL

ICON Data HPL is a finished system providing static-dissipative access floor panels.

### CONCEPT+ CUSTOM VINYL

The CONCEPT+ Series offers access floor panels that are pre-finished in your choice of surface finish, allowing full underfloor accessibility.

### CONCEPT+ TIMBER

The CONCEPT+ Timber Series offers access floor panels that are pre-finished in FSC Timber, allowing full underfloor accessibility.